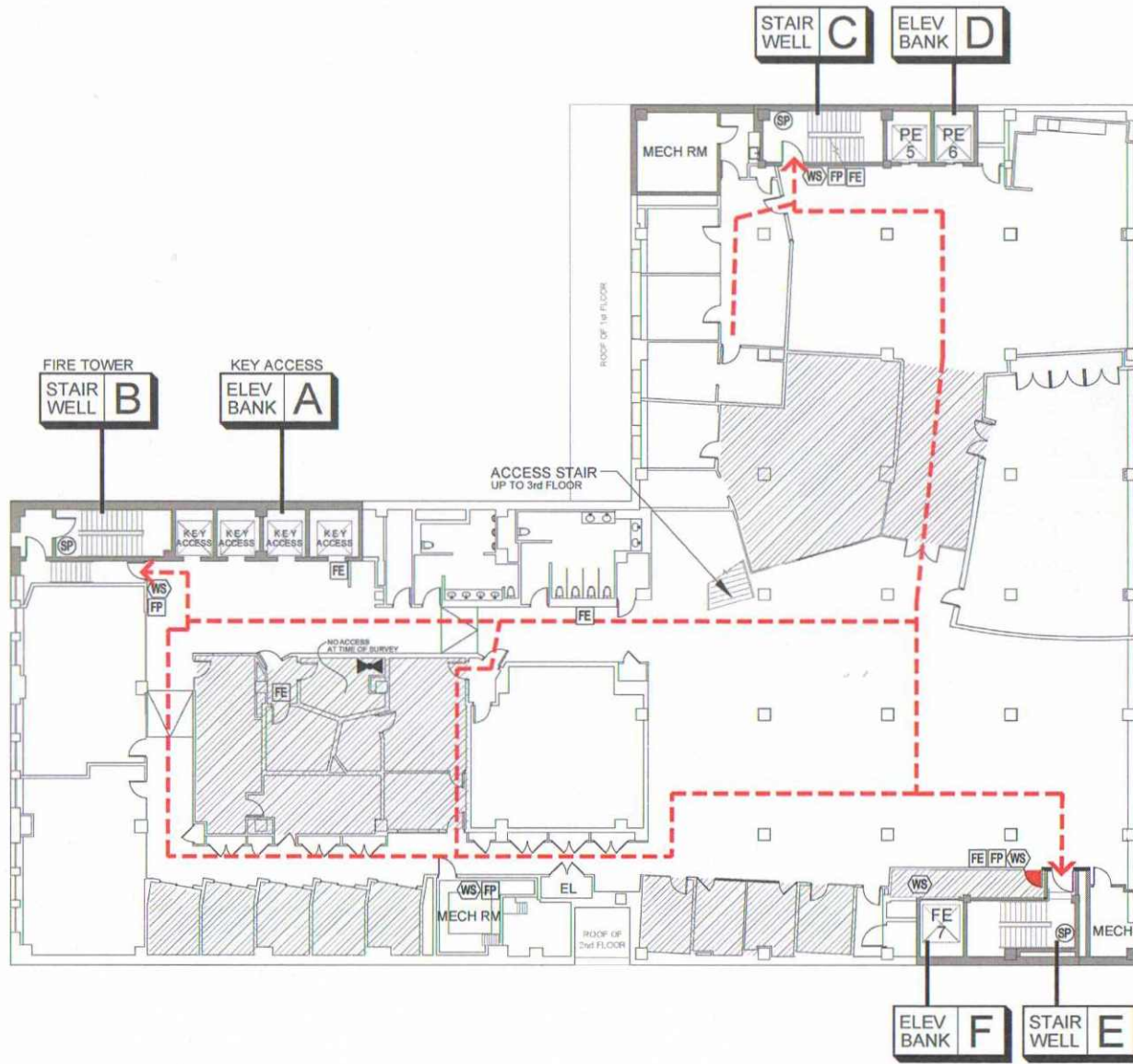


DISCLAIMER: THESE DRAWINGS WERE CREATED FOR EAP AND/OR FIRE SAFETY FILING ONLY. DO NOT SCALE DRAWING. EXISTING CONDITIONS AND DIMENSIONS MAY VARY AND ARE TO BE FIELD VERIFIED.

WEST 41ST STREET



LEGEND

NOTE: Not all devices and designations in legend may apply to this building

- Fire Alarm Pull (FP)
- Fire Extinguisher (FE)
- Standpipe (SP) (with or w/o a hose)
- Fire Hose (FH) (without standpipe hose outlet)
- Warden Station (WS) (Fire phone or phone jack)
- Fire Command Station (FCS) (See Ground Floor)
- Fire Dept. Connection (See Ground Fl. & Site Plan)
- Sprinkler Valve (SV)
- Standpipe Valve (SPV)
- Combo Valve (CV) (standpipe/sprinkler riser valve)
- Evacuation Route
- Furniture/ Equip. (furniture/ equipment/ removable partitions)
- Permanent Partition (non-removable permanent partitions)
- Fire Barrier (permanent part. walls of damping corridors, & mech. equip. rooms)
- In-Building Relocation Areas (IBRAs)
- Areas not sprinkled* (*Shown on partially covered floors (see bottom right corner of plan for details))

WEST 40TH STREET

NO	DATE	NAME	ISSUED COMMENTS
1	06.14.13	AT	ROUGH DRAFT ISSUED FOR REVIEW
2	06.26.13	AT	PLANS FULLY UPDATED TO CODE ISSUED FOR REVIEW ONLY
3	07.25.13	JHR	REVISED PER CONSULTANT/CLIENT ISSUED FOR REVIEW AND FILING

Drawn By: AR/ AT Checked By: AT/ DL

BUILDING ADDRESS:
230 West 41st Street
 New York, N.Y. 10036

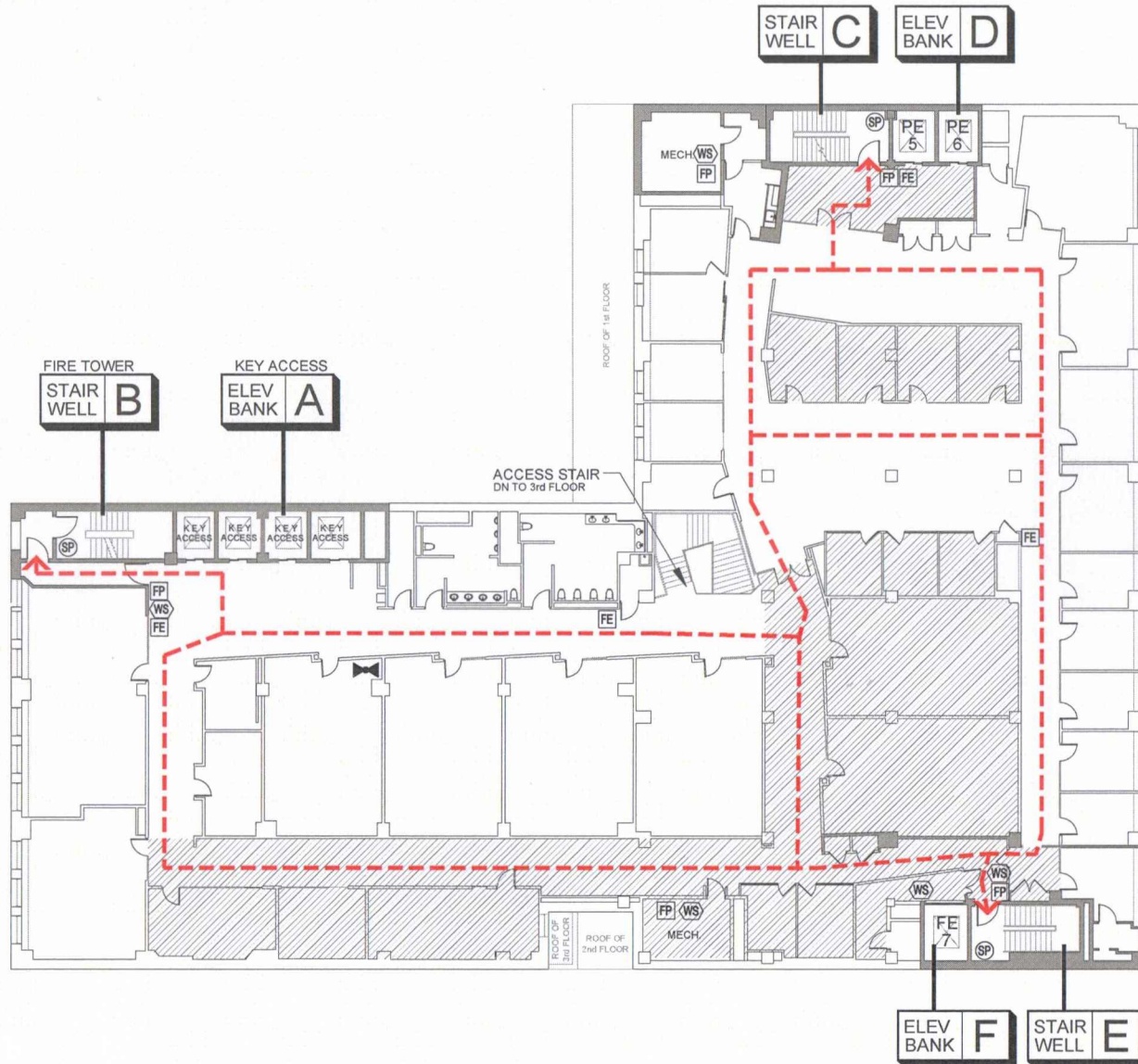
DRAWING TITLE:
FL-3
 3rd Floor

SURVEY BY: AT/ DL SURVEY DATE(S): 05.21.13

Note: Full Sprinkler Coverage

RDM
 THESE DRAWINGS WERE CREATED FOR EAP AND/OR FIRE SAFETY FILING ONLY. DO NOT SCALE DRAWING. EXISTING CONDITIONS AND DIMENSIONS MAY VARY AND ARE TO BE FIELD VERIFIED.

WEST 41ST STREET



LEGEND

NOTE: Not all devices and designations in legend may apply to this building

- Fire Alarm Pull (FP)
- Fire Extinguisher (FE)
- Standpipe (SP) (with or w/o a hose)
- Fire Hose (FH) (without standpipe hose outlet)
- Warden Station (WS) (Fire phone or phone jack)
- Fire Command Station (FCS) (See Ground Floor)
- Fire Dept. Connection (See Ground Fl. & Site Plan)
- Sprinkler Valve (SV)
- Standpipe Valve (SPV)
- Combo Valve (CV) (standpipe/sprinkler riser valve)
- Evacuation Route
- Furniture/ Equip. (furniture/ equipment/ removable partitions)
- Permanent Partition (non-removable permanent partitions)
- Fire Barrier (permanent part. walls of demising corridors, & mech. equip. rooms)
- In-Building Relocation Areas (IBRAs)
- Areas not sprinkled* (Shown on partially covered floors (See bottom right corner of plan for details))

WEST 40TH STREET

NO.	DATE	NAME	ISSUE/ COMMENTS
1	06.14.13	AT	ROUGH DRAFT ISSUED FOR REVIEW
2	08.28.13	AT	PLANS FULLY UPDATED TO CODE ISSUED FOR REVIEW ONLY
	07.23.13	JHR	REVISED PER CONSULTANT/CLIENT ISSUED FOR REVIEW AND FILING

Drawn By: AR/ AT Checked By: AT/ DL

BUILDING ADDRESS:
230 West 41st Street
 New York, N.Y. 10036

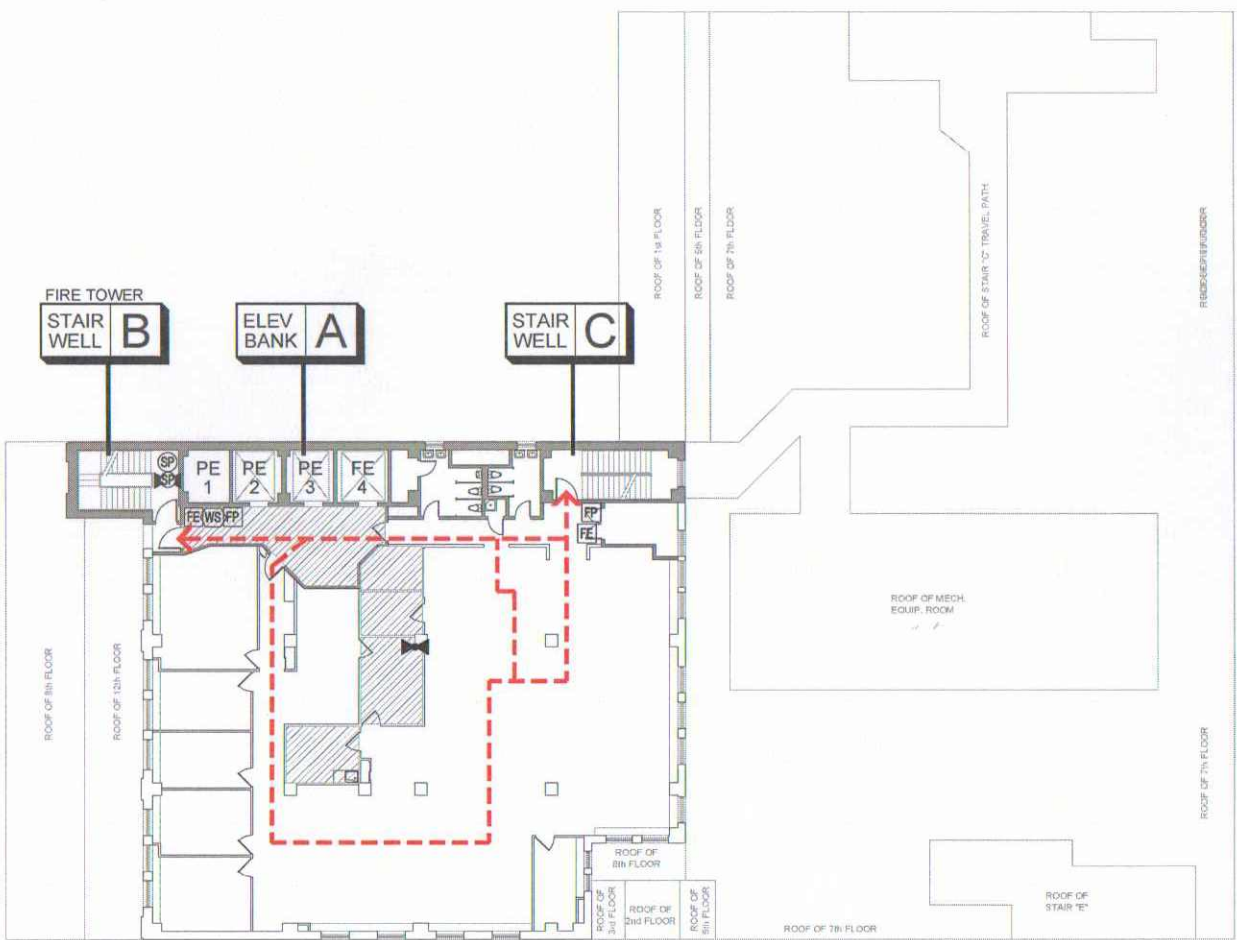
DRAWING TITLE:
FL-4
 4th Floor

SURVEY BY: AT/ DL SURVEY DATE(S): 05.21.13

Note: Full Sprinkler Coverage

DISCLAIMER: THESE DRAWINGS WERE CREATED FOR EAP AND/OR FIRE SAFETY PLING ONLY. DO NOT SCALE DRAWING. EXISTING CONDITIONS AND DIMENSIONS MAY VARY AND ARE TO BE FIELD VERIFIED.

WEST 41ST STREET



LEGEND

NOTE: Not all devices and designations in legend may apply to this building

- FP** Fire Alarm Pull (FP)
- FE** Fire Extinguisher (FE)
- SP** Standpipe (SP) (with or w/o a hose)
- FH** Fire Hose (FH) (without standpipe hose outlet)
- WS** Warden Station (WS) (Fire phone or phone jack)
- FCS** Fire Command Station (FCS) (See Ground Floor)
- FD** Fire Dept. Connection (See Ground Fl. & Site Plan)
- SV** Sprinkler Valve (SV)
- SPV** Standpipe Valve (SPV)
- CV** Combo Valve (CV) (standpipe/sprinkler riser valve)
- EXIT** Evacuation Route
- Furniture/ Equip.** (furniture/ equipment/ removable partitions)
- Permanent Partition** (non-removable permanent partitions)
- Fire Barrier** (permanent part. walls of demising, corridors, & mech. equip. rooms)
- In-Building Relocation Areas (IBRAs)**
- Areas not sprinkled*** *Shown on partially covered floors (See bottom right corner of plan for details)

WEST 40TH STREET

NO	DATE	NAME	ISSUED COMMENTS
1	06.14.13	AT	ROUGH DRAFT ISSUED FOR REVIEW
2	06.26.13	AT	PLANS FULLY UPDATED TO CODE ISSUED FOR REVIEW ONLY
	07.23.13	JHR	REVISED PER CONSULTANT CLIENT ISSUED FOR REVIEW AND FILING

Drawn By: AR / AT Checked By: AT / DL

BUILDING ADDRESS:
230 West 41st Street
 New York, N.Y. 10036

DRAWING TITLE:
FL-14
 14th Floor

SURVEY BY: AT / DL SURVEY DATE(S): 05.21.13

Note: Full Sprinkler Coverage