

Fire Emergencies – Emergency Notification Method: Building Alarm

Please note the college is equipped with various fire mitigating systems, including sprinklers systems, smoke detectors and fire extinguishers that are tested and checked regularly in accordance with FDNY regulations. The college also has trained personnel on site that will assist in response to a fire emergency.

Preparation: Become familiar with the locations of emergency exit stairwells, fire extinguishers, and emergency pull stations.

- 1) If a fire emergency exists, activate the nearest red box pull station, located by all emergency stairwell exit doors. By FDNY code, they are located by all emergency exit points that lead to street level.
- 2) If you are trained to do so and the fire is small, use a fire extinguisher to extinguish or minimized the spread of fire.
- 3) Immediately evacuate all rooms and close doors. Closing doors helps prevent the spread of fire and smoke.
- 4) Evacuate using emergency stairwells NOT ELEVATORS. For mobility impaired, go to an area of rescue assistance which is a stairwell landing.
 - a. FDNY will ascend the stairwells in response to an emergency and perform rescues as needed.
 - b. If you are assisting someone with a disability, ask them how you can help before attempting any rescue assistance.
 - c. Notify emergency responders the location of anyone that has remained in the building.
- 5) If the order is given to evacuate, please use one of the emergency stairwells as follows:
 - a. Floors 3 & 4 – utilize stairwells B, C, & E unless otherwise directed by the building’s Fire Safety Director.
 - b. Floor 14 - utilize stairwells B & C unless otherwise directed by the building’s Fire Safety Director.
- 6) Once outside, respond to the west side of Bryant Park (6th Avenue between 40th & 41st streets) as this is our campus reunification area. Information regarding the incident, such as closure or repopulating the building will occur at this location. **DO NOT RETURN TO AN EVACUATED BUILDING** unless told to do so by a college official.



CUNY GRADUATE SCHOOL OF JOURNALISM

Note: If you become trapped in a building during a fire and a window is available, place an article of clothing outside the window to alert FDNY rescue crews of your location. If there is no window, stay low to the floor and shout out at regular intervals to alert rescue personnel.

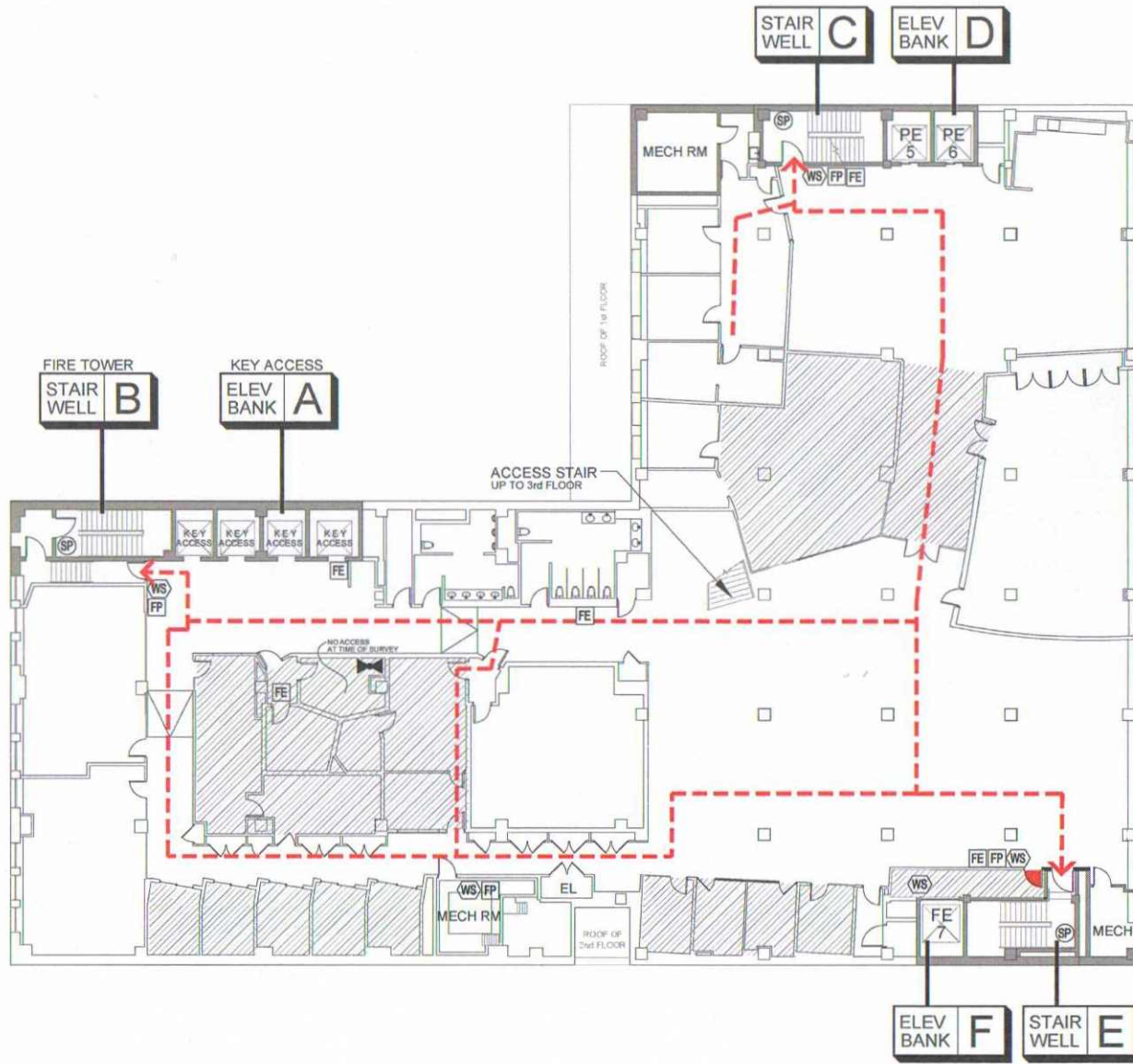
Please remember to treat any activation of the fire alarm as an actual emergency. Follow the above listed evacuation procedures.

Follow up Communications: PA Announcement, College email, and/or CUNY Alert



DISCLAIMER: THESE DRAWINGS WERE CREATED FOR EAP AND/OR FIRE SAFETY FILING ONLY. DO NOT SCALE DRAWING. EXISTING CONDITIONS AND DIMENSIONS MAY VARY AND ARE TO BE FIELD VERIFIED.

WEST 41ST STREET



LEGEND

NOTE: Not all devices and designations in legend may apply to this building

- Fire Alarm Pull (FP)
- Fire Extinguisher (FE)
- Standpipe (SP) (with or w/o a hose)
- Fire Hose (FH) (without standpipe hose outlet)
- Warden Station (WS) (Fire phone or phone jack)
- Fire Command Station (FCS) (See Ground Floor)
- Fire Dept. Connection (See Ground Fl. & Site Plan)
- Sprinkler Valve (SV)
- Standpipe Valve (SPV)
- Combo Valve (CV) (standpipe/sprinkler riser valve)
- Evacuation Route
- Furniture/ Equip. (furniture/ equipment/ removable partitions)
- Permanent Partition (non-removable permanent partitions)
- Fire Barrier (permanent part. walls of stairways, corridors, & mech. equip. rooms)
- In-Building Relocation Areas (IBRAs)
- Areas not sprinkled* (*Shown on partially covered floors (see bottom right corner of plan for details))

WEST 40TH STREET

NO	DATE	NAME	ISSUED COMMENTS
1	08.14.13	AT	ROUGH DRAFT ISSUED FOR REVIEW
2	08.28.13	AT	PLANS FULLY UPDATED TO CODE ISSUED FOR REVIEW ONLY
3	07.25.13	JHR	REVISED PER CONSULTANT/CLIENT ISSUED FOR REVIEW AND FILING

Drawn By: AR/ AT Checked By: AT/ DL

BUILDING ADDRESS:
230 West 41st Street
 New York, N.Y. 10036

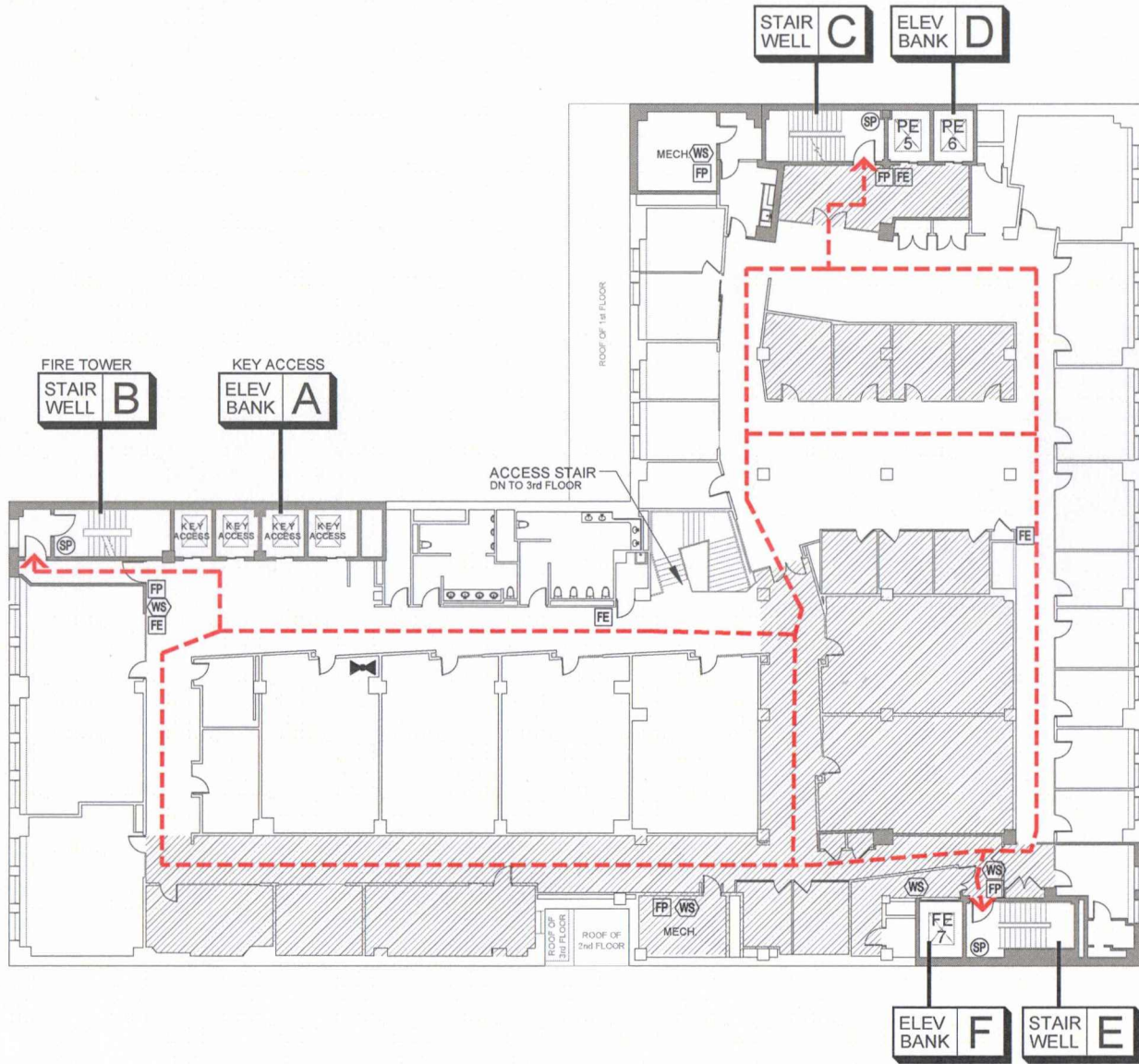
DRAWING TITLE:
FL-3
 3rd Floor

SURVEY BY: AT/ DL SURVEY DATE(S): 05.21.13

Note: Full Sprinkler Coverage

RDM
DESCRIBER: THESE DRAWINGS WERE CREATED FOR EAP AND/OR FIRE SAFETY FILING ONLY. DO NOT SCALE DRAWING. EXISTING CONDITIONS AND DIMENSIONS MAY VARY AND ARE TO BE FIELD VERIFIED.

WEST 41ST STREET



LEGEND

NOTE: Not all devices and designations in legend may apply to this building

- Fire Alarm Pull (FP)
- Fire Extinguisher (FE)
- Standpipe (SP) (with or w/o a hose)
- Fire Hose (FH) (without standpipe hose outlet)
- Warden Station (WS) (Fire phone or phone jack)
- Fire Command Station (FCS) (See Ground Floor)
- Fire Dept. Connection (See Ground Fl. & Site Plan)
- Sprinkler Valve (SV)
- Standpipe Valve (SPV)
- Combo Valve (CV) (standpipe/sprinkler riser valve)
- Evacuation Route
- Furniture/ Equip. (furniture/ equipment/ removable partitions)
- Permanent Partition (non-removable permanent partitions)
- Fire Barrier (permanent part. walls of demising corridors, & mech. equip. rooms)
- In-Building Relocation Areas (IBRAs)
- Areas not sprinkled* (Shown on partially covered floors (See bottom right corner of plan for details))

WEST 40TH STREET

NO.	DATE	NAME	ISSUE/ COMMENTS
1	06.14.13	AT	ROUGH DRAFT ISSUED FOR REVIEW
2	08.28.13	AT	PLANS FULLY UPDATED TO CODE ISSUED FOR REVIEW ONLY
	07.23.13	JHR	REVISED PER CONSULTANT/CLIENT ISSUED FOR REVIEW AND FILING

Drawn By: AR/ AT Checked By: AT/ DL

BUILDING ADDRESS:
230 West 41st Street
New York, N.Y. 10036

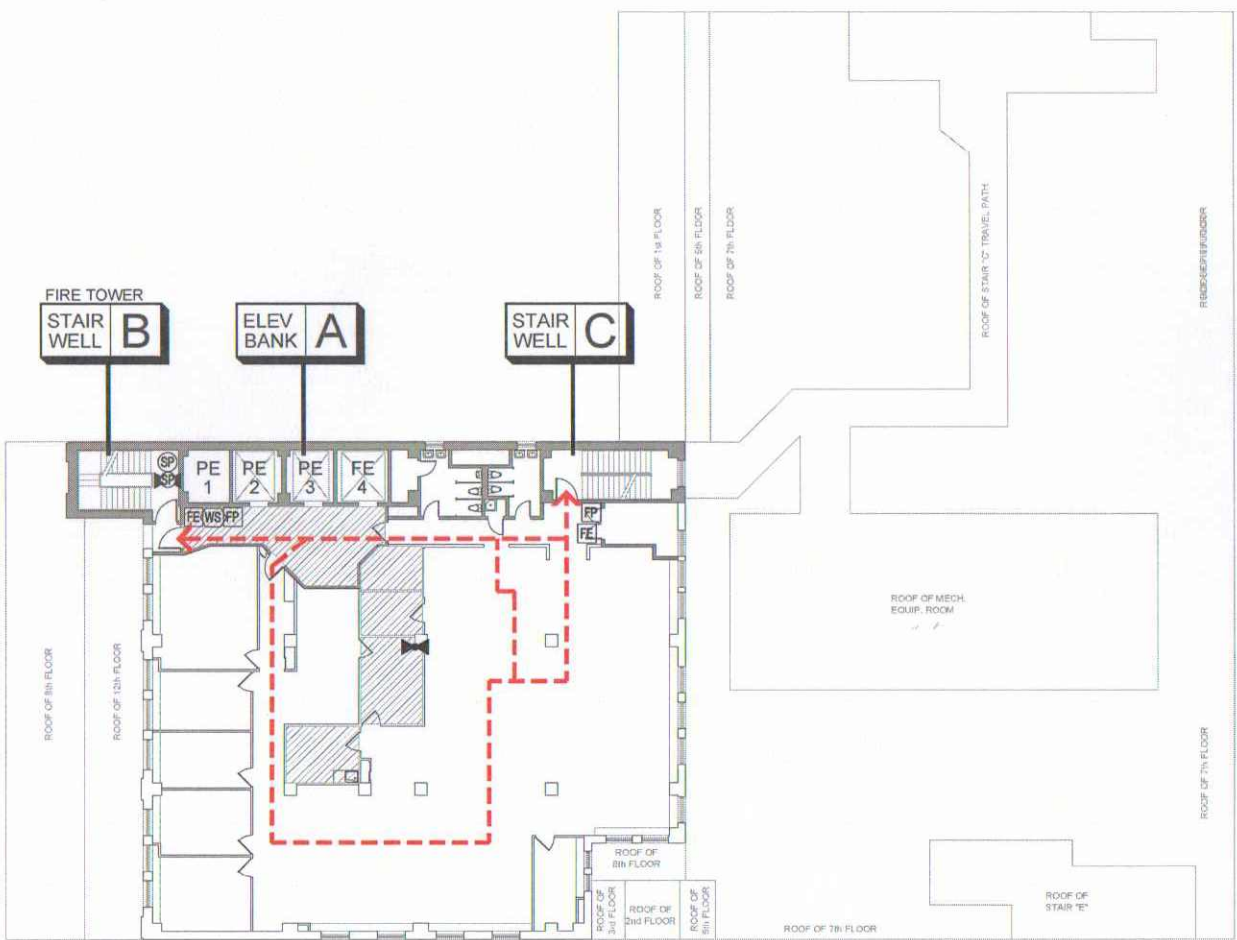
DRAWING TITLE:
FL-4
4th Floor

SURVEY BY: AT/ DL SURVEY DATE(S): 05.21.13

Note: Full Sprinkler Coverage

DISCLAIMER: THESE DRAWINGS WERE CREATED FOR EAP AND/OR FIRE SAFETY PLING ONLY. DO NOT SCALE DRAWING. EXISTING CONDITIONS AND DIMENSIONS MAY VARY AND ARE TO BE FIELD VERIFIED.

WEST 41ST STREET



LEGEND

NOTE: Not all devices and designations in legend may apply to this building

- FP** Fire Alarm Pull (FP)
- FE** Fire Extinguisher (FE)
- SP** Standpipe (SP) (with or w/o a hose)
- FH** Fire Hose (FH) (without standpipe hose outlet)
- WS** Warden Station (WS) (Fire phone or phone jack)
- FCS** Fire Command Station (FCS) (See Ground Floor)
- FD** Fire Dept. Connection (See Ground Fl. & Site Plan)
- SV** Sprinkler Valve (SV)
- SPV** Standpipe Valve (SPV)
- CV** Combo Valve (CV) (standpipe/sprinkler riser valve)
- EXIT** Evacuation Route
- Furniture/ Equip.** (furniture/ equipment/ removable partitions)
- Permanent Partition** (non-removable permanent partitions)
- Fire Barrier** (permanent part. walls of demising, corridors, & mech. equip. rooms)
- In-Building Relocation Areas (IBRAs)**
- Areas not sprinkled*** *Shown on partially covered floors (See bottom right corner of plan for details)

WEST 40TH STREET

NO	DATE	NAME	ISSUED COMMENTS
1	06.14.13	AT	ROUGH DRAFT ISSUED FOR REVIEW
2	06.26.13	AT	PLANS FULLY UPDATED TO CODE ISSUED FOR REVIEW ONLY
	07.23.13	JHR	REVISED PER CONSULTANT CLIENT ISSUED FOR REVIEW AND FILING

Drawn By: AR / AT Checked By: AT / DL

BUILDING ADDRESS:
230 West 41st Street
 New York, N.Y. 10036

DRAWING TITLE:
FL-14
 14th Floor

SURVEY BY: AT / DL SURVEY DATE(S): 05.21.13

Note: Full Sprinkler Coverage